



NAPCO

NAPCO - USA
Fire Alarm System
The Intelligent Solution

MANUFACTURED IN ACCORDANCE WITH



creating innovative technology to secure your future



Sold and installed by tens-of-thousands of security professionals, millions of homes, businesses, institutions and people around the globe are protected by products from the NAPCO Group of Companies.

For decades, the Napco Security Group has held firmly to its commitment to both innovative product development and high quality production. With more than 250,000 square feet of state-of-the-art manufacturing facilities of its own, including high-speed SMD, three-stage in-line testing and comprehensive burn-in facilities, Napco and its divisions are fully backward-vertically integrated and equipped to expeditiously deliver on all security requirements, large and mass or small and customized.

NAPCO Security Systems, Inc. (NASDAQ: NSSC), headquartered in New York, is a publicly traded firm long-led by its founder and chairman and its progressive management team including a unique blend of seasoned security experts and top marketing and engineering professionals with many decades of combined experience and a wealth of knowledge upon which to draw.





Intelligent Photoelectric Smoke Detector

- Aesthetically pleasing Low profile design
- 8 Bit intelligent processor with A/D converter
- Built in algorithm maps for false alarm rejection.
- Electronically addressed
- Sensitivity adjustable via hand held programming tool.
- Removable Optical chamber for easy cleaning and maintenance.
- Conventional detector version also available (NC-102)

Technical Specifications

- Operating voltage: Loop 24V
- Operating current :
Standby current: $\leq 600\mu\text{A}$
Alarm current $\leq 2\text{mA}$
- Operating environment:
Temperature :- $10^{\circ}\text{C} \sim + 60^{\circ}\text{C}$
Relative humidity: $\leq 95\%$
- Dimension: Diameter: 10cm Height: 5cm

NI-102

Intelligent Dual Heat Detector

- Fixed Temperature and Rate of Rise Detection
- Aesthetically pleasing Low profile design
- 8 Bit intelligent processor with A/D converter
- Electronically addressed
- Fixed Temperature response is adjustable via hand held programming tool between 58°C and 74°C .
- Conventional detector version also available (NC-103)

Technical Specifications

- Operating voltage: Loop 24V
- Operating current:
Standby current: $\leq 800\mu\text{A}$
Alarm current $\leq 1.4\text{mA}$
- Operating environment:
Temperature:- $10^{\circ}\text{C} \sim + 60^{\circ}\text{C}$
Relative humidity: $\leq 95\%$
- Dimension: Diameter: 10cm Height: 5cm

NI-103

Intelligent Ultraviolet Flame Detector

- Sensitive Ultraviolet sensor that detects the UV rays produced by a flame.
- Not effected by sunlight.
- Aesthetically pleasing Low profile design
- Dust / corrosion / Humidity resistant.
- Electronically addressed
- Conventional detector version also available (NC-104)

Technical Specifications

- Operating voltage: Loop 24V
- Operating current: Standby
current: $\leq 1.5\text{mA}$ Alarm
current $\leq 10\text{mA}$
- Operating environment:
Temperature:- $10^{\circ}\text{C} \sim + 60^{\circ}\text{C}$
Relative humidity: $\leq 95\%$
- Detection Angle: ≤ 80 Degree
- Dimension: Diameter: 10cm Height: 5cm

NI-104



Combined Optical / Heat Detector

NI-101

- Combining all the features of the NI-102 Optical and the NI-103 Dual heat detector to provide the ultimate cover for life safety systems
- Conventional detector version also available (NC-101)

Technical Specifications

- Operating voltage: Loop 24V
- Operating current:
Standby current: $\leq 800\mu\text{A}$
Alarm current $\leq 2\text{mA}$
- Operating environment:
Temperature: $-10^{\circ}\text{C} \sim +60^{\circ}\text{C}$
Relative humidity: $\leq 95\%$
- Dimension: Diameter: 10cm Height:



Intelligent Reflective Beam Detector

NI-105R

- Suitable for detection coverage of atriums and warehouses, factories, tunnels
- Range 8-100 metres
- Alignment indication LEDs and adjustable pivot base for easy beam alignment
- Reduced installation costs due to intelligent addressable control (no requirement for local control interfacing and reset)
-
- Electronically addressed by NP-910.
- Conventional detector version also available (NC-105R)

Technical Specifications

- Operating voltage: Loop 24V
- Operating current:
Standby current: $\leq 12\text{mA}$
Alarm current: 22mA
- Detection Range: Length from 8 to 100 meters, width 14 meters.
- Wiring: Non-polarized two-core 24VDC for emitter
Non-polarized two-core loop for receiver
- Operating environment:
Temperature: $-10^{\circ}\text{C} \sim +60^{\circ}\text{C}$
Relative humidity: $\leq 95\%$



Standard Detector Base

DZ-03

- Non polarized terminals and multi-positioning design allows easy direction adjustment of the detector
- Compatible with Napco-USA conventional detectors
- Diode base version (DZ-03D) for conventional detectors with Active End of Line (NP-907)



Addressable Manual Call Point

- Addressable Manual Call Point (MCP) with re-settable (non breaking) glass
- Additional volt free contacts for local interfacing (i.e. PTZ camera preset)
- Two part plug-in construction with base mounted termination allows for easy installation and connection.
- MCP can be addressed and plugged in to base at time of commissioning.
- Electronically addressed
- Suitable for semi-flush and surface mount installation
- Conventional MCP version with 470 Ohm alarm contacts part number NC-201

Technical Specifications

- Operating Voltage: Loop 24V
- Operating Current:
 - Monitoring Current: 0.8mA
 - Alarm Current: 2mA
- N/O Output Contact: Rating Value 60VDC, 0.1A
- Contact Resistance 100m ohm
- Electronically addressed
 - Temperature: -10 ~+ 60°C
 - Relative Humidity: 95%
- Dimensions: 90mm x 122mm x 48.5mm



NI-201



Addressable Manual Call Point

- Compatible with latest EN standards.
- Non-breaking re-settable glass (via special key).
- Two part plug-in construction with base mounted termination allows easy installation and connection.
- Conventional MCP version with 470 Ohm Alarm contacts part number NC-202

Technical Specifications

- Operating Voltage: Loop 24V
- Operating Current:
 - Monitoring Current: 0.8mA
 - Alarm Current: 2mA
- N/O output contact: Rating 100mA/30VDC
- Contact Resistance 100m ohm
- Operating environment:
 - Temperature: -10 ~+ 60°C
 - Relative humidity: 95%
- Dimensions: 95mm x 98mm x 40mm

NI-202



Intelligent Combustible Gas Detector

NI-601/2



- Available for LPG, Natural gas and Coal Gas.
 - Built-in relay contacts for control of gas valves / Extract etc (NI-602)
 - Built-in buzzer for local alarm
 - Manual reset and control (on/off) of relay contacts
 - Electronically addressed
- Conventional detector version also available (NC-601) & (NC-602)

Technical Specifications

- Operating voltage: Loop 24V
- Operating Consumption: ≤1.5Watt
- Alarm Level: Pre-alarm 12%LEL Urgent Alarm: 23%LEL
- Output: K1/K2, N/O contact, 3A/220VAC, active when pre-alarm V1/V2, active output. 3A/5VDC, start when full alarm
- Wiring:
 - Non-polarized two-core for loop
 - Non-polarized two-core for 24VDC power supply
- Operating environment: Temperature: - 10°C ~+ 60°C
Relative Humidity: ≤95%

Intelligent Input Module

NI-300



- Monitors switch contacts of remote equipment
- Two part plug-in construction with base mounted termination allows easy installation and connection
- Intelligent interface can be addressed and plugged in to base at time of commissioning
- Electronically addressed
- For surface mount cable installations use surface mount interface back box (SMIBB-1)

Technical Specifications

- Operating Voltage: Loop 24V
- Operating Current:
 - Standby Current ≤1mA
 - Action Current: ≤5mA
- Operating Environment: Temperature: -10 °C~+ 60 °C
Relative Humidity: ≤95%
- Dimension: 120mmX80mmX40mm

Interposing Relay Module

NC-302



- A/C relay interface, used in conjunction with intelligent I/O module to interface with 220 volt equipment
- Two part plug-in construction with base mounted termination allows easy installation and connection
- Interface can be plugged in to base at time of commissioning
- For surface mount cable installations use surface mount interface back box (SMIBB-1)
- Can be used with conventional alarm circuits



NI-301

Intelligent Single Input /Output Module



- Addressable I/O with 24V /3Amp relay contacts
- Confirmation input to confirm to fire alarm panel the equipment controlled by the interface and responded when activated
- Two part plug-in construction with base mounted termination allows easy installation and connection
- Intelligent interface can be addressed and plugged in to base at time of commissioning
- Electronically addressed
- For surface mount cable installations use surface mount interface back box (SMIBB-1)

Technical Specifications

- Operating Voltage: Loop 24V
- Operating Current:
Standby Current $\leq 1\text{mA}$
Action Current: $\leq 5\text{mA}$
- Wiring:
Non-polarized two-core for loop
Non-polarized two-core for 24VDC power supply
- Operating Environment:
Temperature: $-10^{\circ}\text{C}\sim +60^{\circ}\text{C}$
Relative Humidity: $\leq 95\%$
- Dimension: 120mmX80mmX40mm

Intelligent Security Interface



- Integrates standard security devices into the alarm network
- 24 to 12volt (DC) step-down for powering of security devices
- Two part plug-in construction with base mounted termination allows easy installation and connection
- Intelligent interface can be addressed and plugged in to base at time of commissioning
- Electronically addressed
- For surface mount cable installations use surface mount interface back box

NI-306

Intelligent Remote Indicator



- Intelligent Addressable Remote indicator
- Can be program linked to any single or group of devices
- High Intensity flashing LED in alarm condition
- Electronically addressed
- Conventional version also available (NC-314)

NI-314



Addressable Sounder and Strobe

- Two parts construction with base mounted termination allows easy installation
- Evacuate only or Alert/Evacuate mode can be set through handheld programmer.
- Remote start input can be used to co-operation with other systems.
- Strobe provided by high intensity LED cluster
- Electronically addressed.
- Compatible sound with sounder base (NI-402 / NC-402)
- Conventional Sounder and Strobe version part number NC-403.

Technical Specifications

- Operation Voltage: Loop 24V
- Operating Current:
 - 24VDC: Standby Current 3mA, Alarm Current 65mA
 - Loop: Standby Current 1mA, Alarm Current: 5mA
- Sounder Output 85dB(Alert) and 94dB (Evacuate)
- Wiring:
 - Non-polarized two-core for loop
 - Non-polarized two-core for power supply
- Operating environment:
 - Temperature: -10 ~+ 60°C
 - Relative humidity: 95%
- Dimension: Diameter 110mm, Height 97.5mm

NI-403

Addressable Sounder

- Identical in appearance and features to the NI-403 but without the strobe element.
- Alarm Current 35mA

NI-404



Intelligent Sounder Driver

- Cost effective (cable saving) distributed addressable control of conventional sounder circuits.
- Connects to conventional polarised 24VDC sounders/strobes
- Utilizes two addresses (one for Alert and one for Evacuate Control).
- Two part plug-in construction with base mounted termination allows easy installation and connection.
- Electronically Addressed

Technical Specifications

- Operating Voltage: Loop 24V
- Operating Current:
 - Standby Current 1mA
 - Output: Maximum 1A, polarized
- End of line: 10k Ω resistor,
- Operating Environment:
 - Temperature: -10 ~+ 60°C
 - Relative Humidity: 95%
- Dimensions: 120mm x 80mm x 40mm

NI-308



Intelligent Sounder Beacon

- Addressable combined flashing beacon and sounder
- Two part plug-in construction with base mounted termination allows easy installation and connection
- Intelligent interface can be addressed and plugged in to base at time of commissioning
- Electronically addressed
- Conventional version also available (NC-401)

Technical Specifications

- Operating Voltage: Loop 24V
- Operating Current:
24VDC Standby Current: $\leq 10\text{mA}$;
Alarming Current: $\leq 160\text{mA}$;
Loop: Standby Current: $\leq 0.8\text{mA}$;
Alarming Current: $\leq 6.0\text{mA}$;
- Alarm volume (SPL): $\geq 95\text{dB @ 1 Meter}$.
- Wiring:
Non-polarized two-core for loop
Non-polarized two-core for 24VDC power supply
- Operating Environment:
Temperature: $-10\text{ }^\circ\text{C} \sim + 60\text{ }^\circ\text{C}$
Relative Humidity: $\leq 95\%$
- Dimension: 144mmX90mmX57mm

NI-401



Sounder Base

- Base Mounted Sounder.
- Can be used as a common base of detector or stand alone with a cover.
- No need of extra power supply.
- Two addresses for Alert and Evacuate Control.
- Conventional Version also available (NC-402)

Technical Specifications

- Operating Voltage: Loop 24V
- Operating Current:
Standby Current $\leq 1\text{mA}$
Action Current: $\leq 15\text{mA}$
- Alarm volume (SPL): $\geq 85\text{dB @ 1 Meter}$.
- Operating Environment:
Temperature: $-10\text{ }^\circ\text{C} \sim + 60\text{ }^\circ\text{C}$
Relative Humidity: $\leq 95\%$
- Dimension: Diameter: 10cm Height: 3.5cm (without cover), 4.5cm (with cover)

NI-402



Intelligent Single Loop Fire Alarm Panel



- Single Loop addressable fire detection panel packed with features not usually associated with smaller systems, providing a high quality solution at exceptional good value.
- Loop capacity 235 intelligent devices.
- Graphical LCD Display.
- 30 Zone indication and manual intervention panel
- Networkable with all Napco-USA Fire panels
- Programmable from PC.
- Built-in gas extinguishing control.
- Integrated Security alarm facilities
- Optional Color Graphics
- Optional Fireman's Control panel
- Optional Panel Printer
- Advanced user friendly programming software including 'Fuzzy Logic'

Technical Specifications

- Power supply: AC220V 50/60Hz
- Operating Environment:
Temperature: -10 °C~+ 40 °C
Relative Humidity: ≤95%
- Dimension: 400mmX560mmX178mm



Intelligent Two Loop Fire Alarm Panel (Expandable to 4 Loops)



- Two Loop addressable fire detection with integrated controls providing the perfect solution for all medium sized projects
- Loop capacity 242 intelligent devices. (Total 484 addressable points)
- Large Graphical LCD Display.
- 30 Zone indication and manual intervention panel
- Networkable with all Napco-USA Fire panels
- Programmable from PC or via on board keypad.
- Built-in gas extinguishing control.
- Integrated Security alarm facilities
- Optional Fireman's Control panel
- Panel Printer
- Optional Color graphics
- Advanced user friendly programming software including 'Fuzzy Logic'.
- 4-Loop Version Available (Maximum 700 devices)

Technical Specifications

- Power supply: AC 220V 50/60Hz
- Operating Environment:
Temperature: -10°C~+ 40°C
Relative Humidity: ≤95%
- Dimension: 500mmX700mmX170mm

Graphical User Interface



- Color graphic control and display system, providing a complete window on to the fire detection system and network along with additional integrated and ancillary equipment i.e. Fire telephone and voice alarm.
- Compatible with all NAPCO-USA Intelligent fire panels
- Multi-level password control for convenient system management



Intelligent Modular 1-20 Loop Fire Alarm System

NGSG5000R



• The larger brother to the NGSG500, this fire command system, with modular loop cards expandable to 20 loops and integrated controls enables full integration with Napco-USA Voice alarm and fire telephone systems. Housed in either rack or console type housings provides the perfect solution for all medium to large systems

- Loop capacity 242 intelligent devices (up to 4840 addressable points)
- Large Graphical LCD Display.
- Zone indication and manual intervention control
- Networkable with all NAPCO-USA Fire panels
- Programmable from PC or via on board keypad.
- Built-in gas extinguishing control.
- Integrated Security alarm facilities
- Optional Fireman's Control panel
- Panel Printer
- Optional Color graphics
- Advanced user friendly programming software including 'Fuzzy Logic'
- Total integration with Napco-USA addressable Voice alarm systems.
- Total integration with Napco-USA addressable Fire Telephone systems.



Technical Specifications

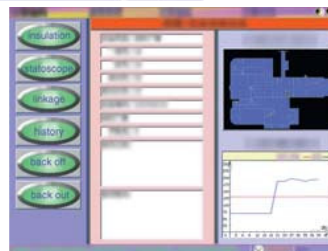
- Power supply: AC220V 50/60Hz
- Operating Environment: Temperature: -10°C~+ 40°C
Relative Humidity: ≤95%
- Dimension: 580mmX520mmX18730mm



Intelligent Modular 1-42 Loop Fire Alarm System

• The Flag ship in the Napco-USA range of Fire command centers, With its large touch screen color graphic LCD control panel expandable up to 42 loops, and full integration with the Napco-USA range of intelligent Voice alarm and Fire telephone solutions systems. Networkable control via the LON works network, enabling total integration with the Napco-USA building management systems providing a seamless complete control system for the most demanding of projects

- Loop capacity 242 intelligent devices.
- Large 10" Touch Screen Color Graphic LCD Display
- Zone indication and manual intervention control
- Lon Works Network facilities
- Built-in gas extinguishing control
- Integrated Security alarm facilities
- On Board Color graphics
- Advanced user friendly programming software including 'Fuzzy Logic'
- Total integration with Napco-USA addressable Voice alarm systems.
- Total integration with Napco-USA addressable Fire Telephone systems.





LCD Repeater Panel

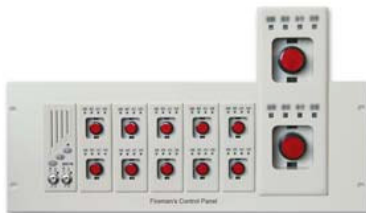
NGSG852RP



- Aesthetically pleasing design with large LCD display
- Compatible with all Napco-USA intelligent fire alarm controllers
- Two part plug-in construction with base mounted termination allows easy installation and connection
- Repeater can be plugged in to base at time of commissioning

Fireman's Control Panel

NGSG14FCP



- Integrated Fireman's' control panels
- Automatic and manual control
- CPU control
- Hinged switch covers to stop accidental operation
- Compatible with all fire control panels



Conventional Fire Alarm Panels

- 2/4/8/16 zone conventional fire alarm panels.
- Both End of Line Resistor and Active End of Line can be used.
- Day/night mode selected
- Key-control evacuate
- Repeater is available for NGSG108 &NGSG116
- Fire alarm output for remote alarm
- Class Change terminal for remote control

Technical Specifications

- Power supply: AC220V 50/60Hz
- Operating Environment:
Temperature: -10°C~+ 40°C
Relative Humidity: ≤95%
- Dimension: 380mmx320mmx95mm
- 15 fire detectors and infinite manual buttons each zone

NGSG 116



Active End of Line

- Active End of Line for conventional fire detection loop.
- It can be used as conventional detector base or work independent with a Cover

NP-907



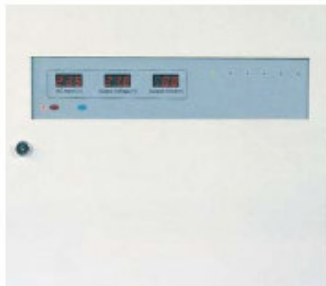
Power Supply Unit

NPSU24-3

- 3amp 24 volt DC Intelligent PSU
- Display shows AC input Voltage, DC output Voltage
- Fully monitored with self test facilities
- Addressable intelligence enabling full monitoring and reporting to Fire Control pane (NPSU24-3A)
- Requires 2x 12volt battery for standby power

Technical Specifications

- Power supply:
AC220V 50/60Hz
- Operating Environment:
Temperature: -10°C~+ 40°C
Relative Humidity: ≤95%
- Dimension: 310mmX400mmX115mm



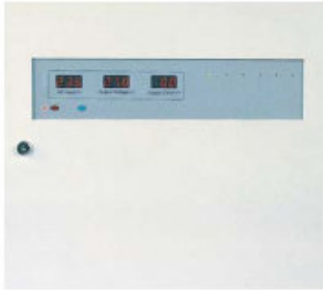
Intelligent Boxed PSU

NPSU24-6

- 6amp 24 volt DC Intelligent PSU
- Display shows AC input Voltage, DC output Voltage, DC Load (amps).
- Fully monitored with self test facilities
- Only requires 2x12volt battery for standby power

Technical Specifications

- Power supply:
AC 220V 50/60Hz
- Operating Environment:
Temperature: -10°C~+ 40°C
Relative Humidity: ≤95%
- Dimension: 500mmX440mmX170mm



Intelligent Network Boxed PSU

- All the Facilities of PSU24-6 with the added facility of addressable control enabling full monitoring and reporting
- Addressable control enables remote reset facilities (enabling non-intelligent ancillary DC powered equipment that requires the removal of power to be reset)

Technical Specifications

- Power supply:
AC 220V 50/60Hz
- Operating Environment:
Temperature: -10°C~+ 40°C
Relative Humidity: ≤95%

NPSU24-6A



Intelligent Power Panel PSU

- 19" Rack Mountable 2u PSU
- 6amp 24volt DC Intelligent PSU
- Display shows AC input voltage, DC output voltage, DC Load (amps)
- Fully monitored with self test facilities
- Only requires 2x12volt battery for standby power

NPSU24-6RM



Extinguishing Cylinder Control Panel

NGSG302

- Capable of controlling up to 6 zone of extinguishing
- Direct intelligent control via addressable Loop
- Auto and manual control Facilities
- Fully monitored status control



Addressable Gas Extinguishing Warning Indicator

NI-318

- Normally located above the entrance to the gas extinguishing protected area
- Eliminate prior to gas release
- Electronically addressed



Emergency Remote Control

NI-317

- Emergency Abort / activate gas release buttons



Conventional Fire Telephone Panel

- 24 zone Conventional Fire Telephone Centre, a dedicated audio communication system, providing 2-way speech between the Fire Team and the Central Command Controller
- Normally installed in high-risk buildings where radio communication would be limited due to the extensive concrete structure
- 19"/3U standard rack mount
- Operator can select single or multi zones for simultaneous Communication
- Operator can ring outstations and fixed handsets
- Up to 10 points can be connected to each zone

NGSG-FT24



Speaker Fire Telephone outstation

- Hand-free extension of Fire Telephone System
- Compatible with all Napco-USA conventional fire telephone handsets in same zone.

NP-9911(S)



Fixed Fire Telephone Handset

- Fixed extension of Fire Telephone System
- Open box and lift receiver to communicate with central control
- Compatible with all Napco-USA conventional fire telephone handsets in same zone

NP-911(F)



Fire Telephone Jack Socket

- Simply insert mobile handset into jack to establish communications with the control centre
- Compatible with all Napco-USA conventional fire telephone handsets in same zone

NP-911(J)



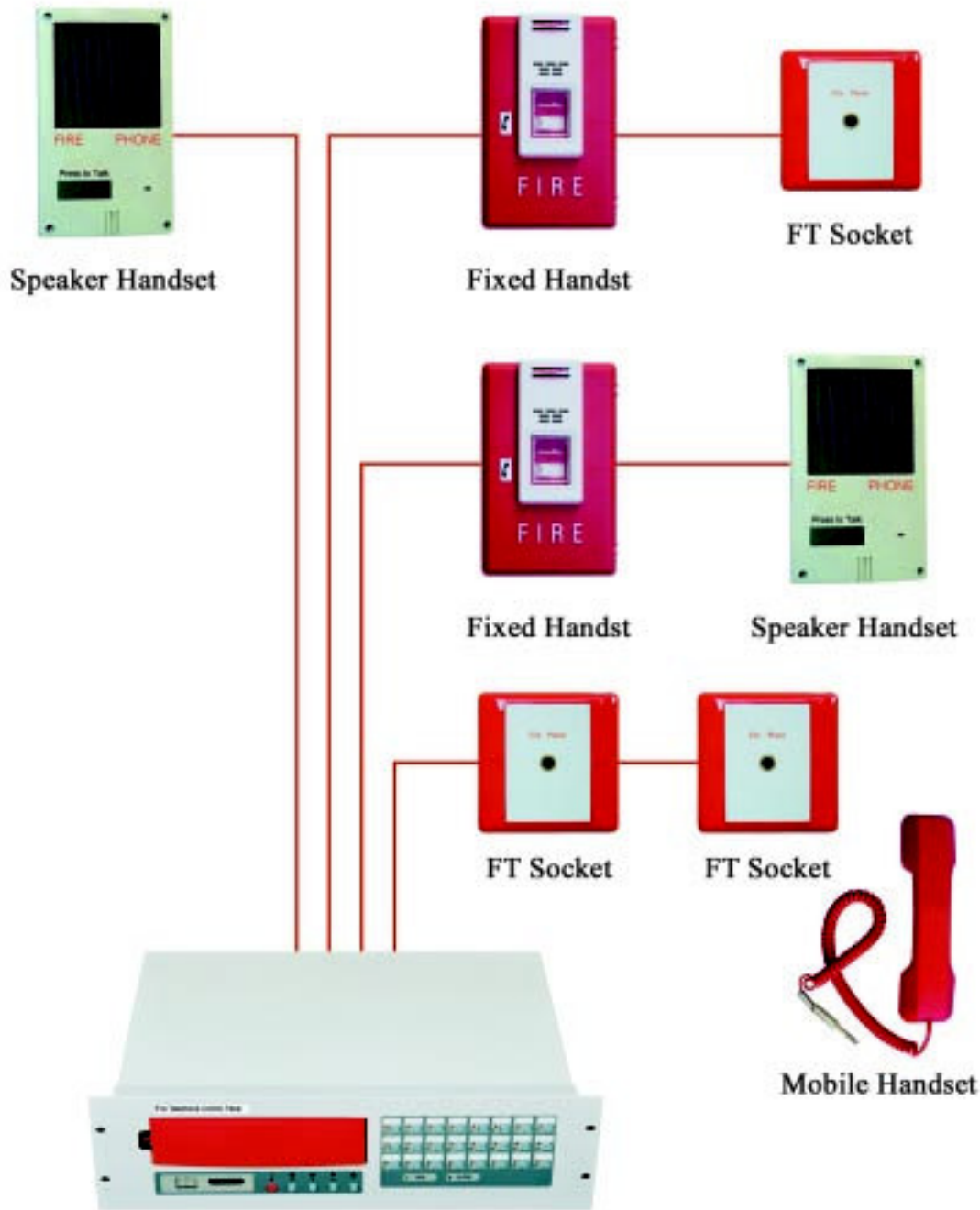
Fire Telephone Mobile Handset

- Mobile handset compatible with Napco-USA fire telephone jacks

NP-911(M)



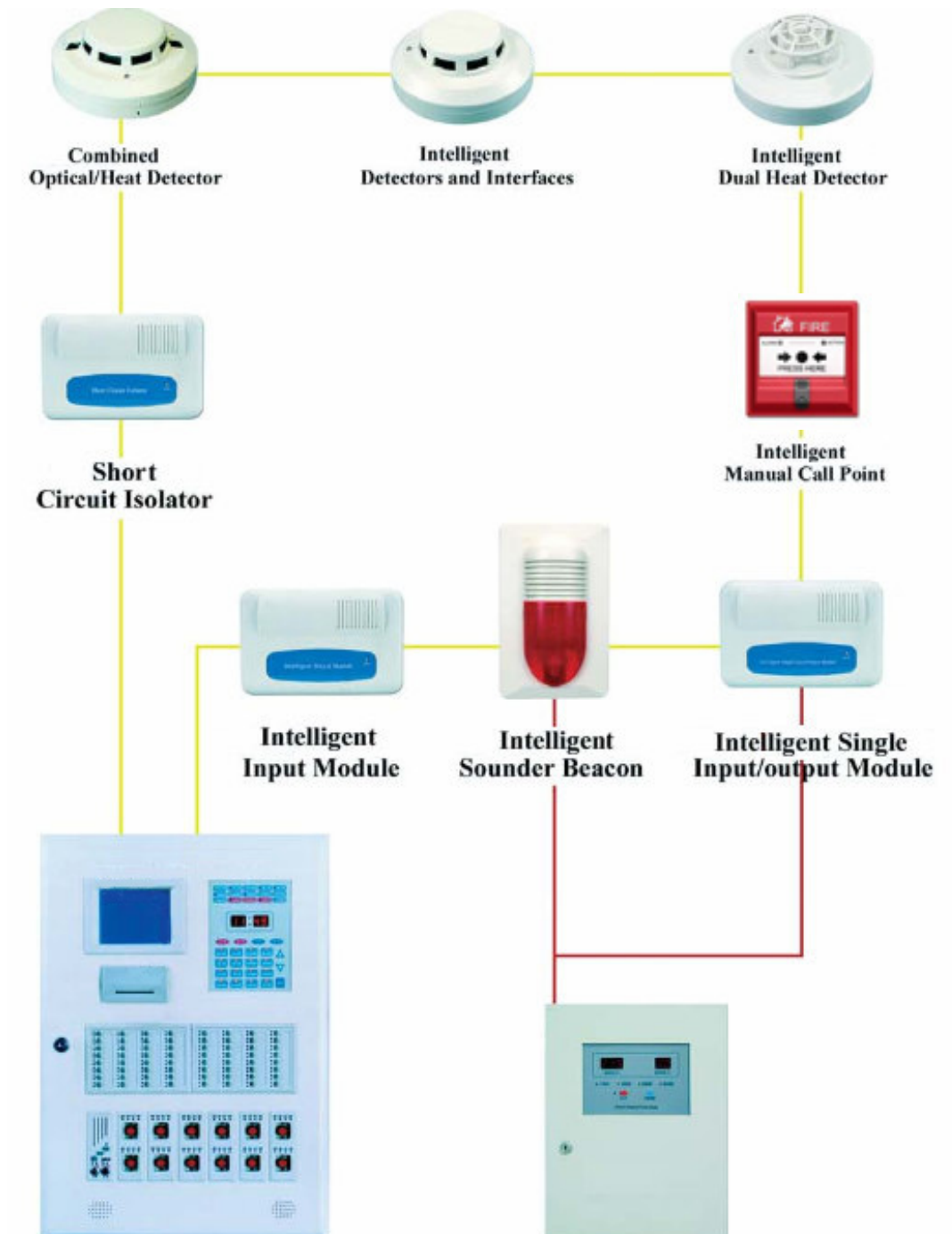
Fire Telephone System



24 Zone Conventional Fire Telephone Control Panel

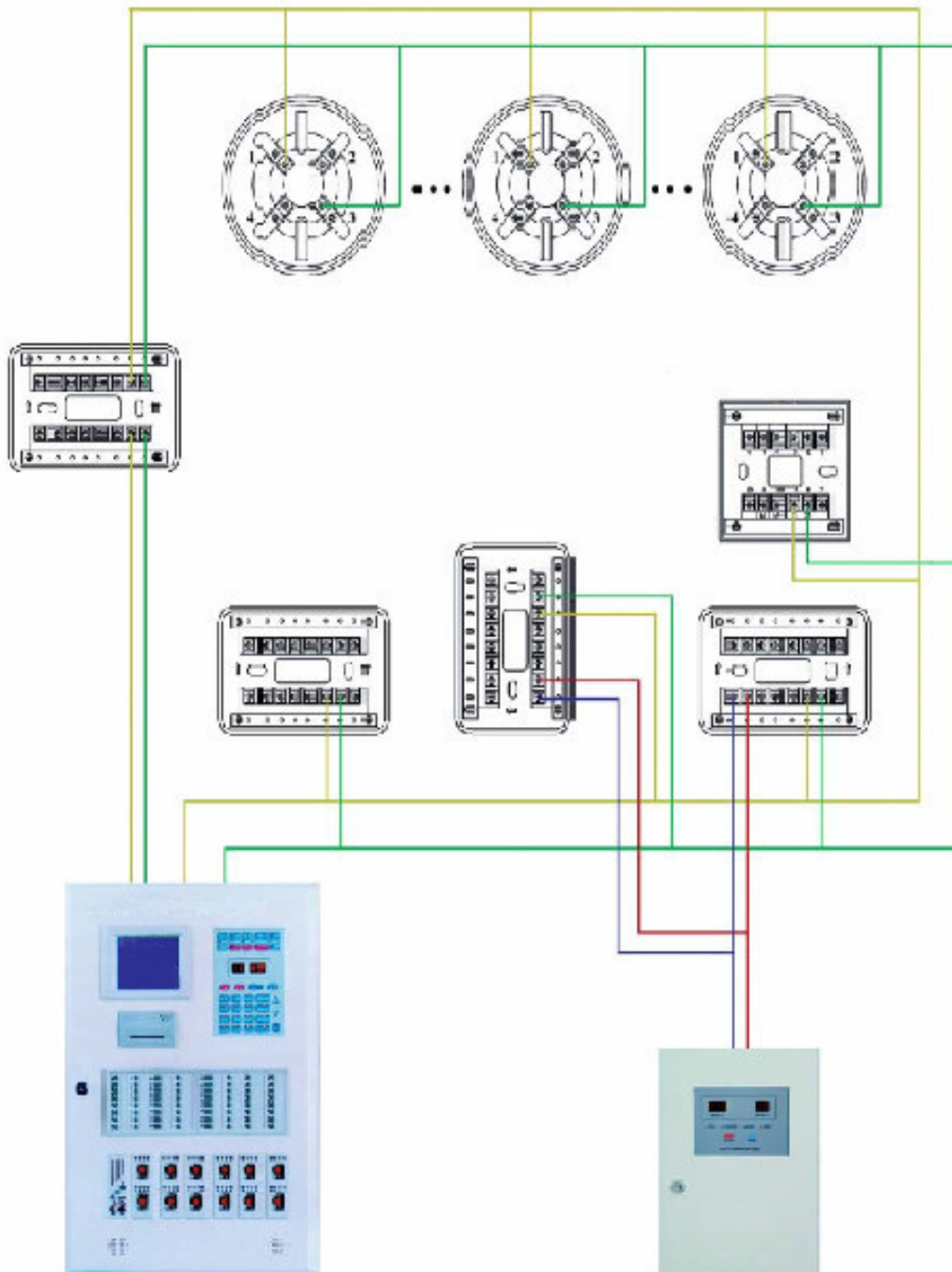


Intelligent Fire Alarm System



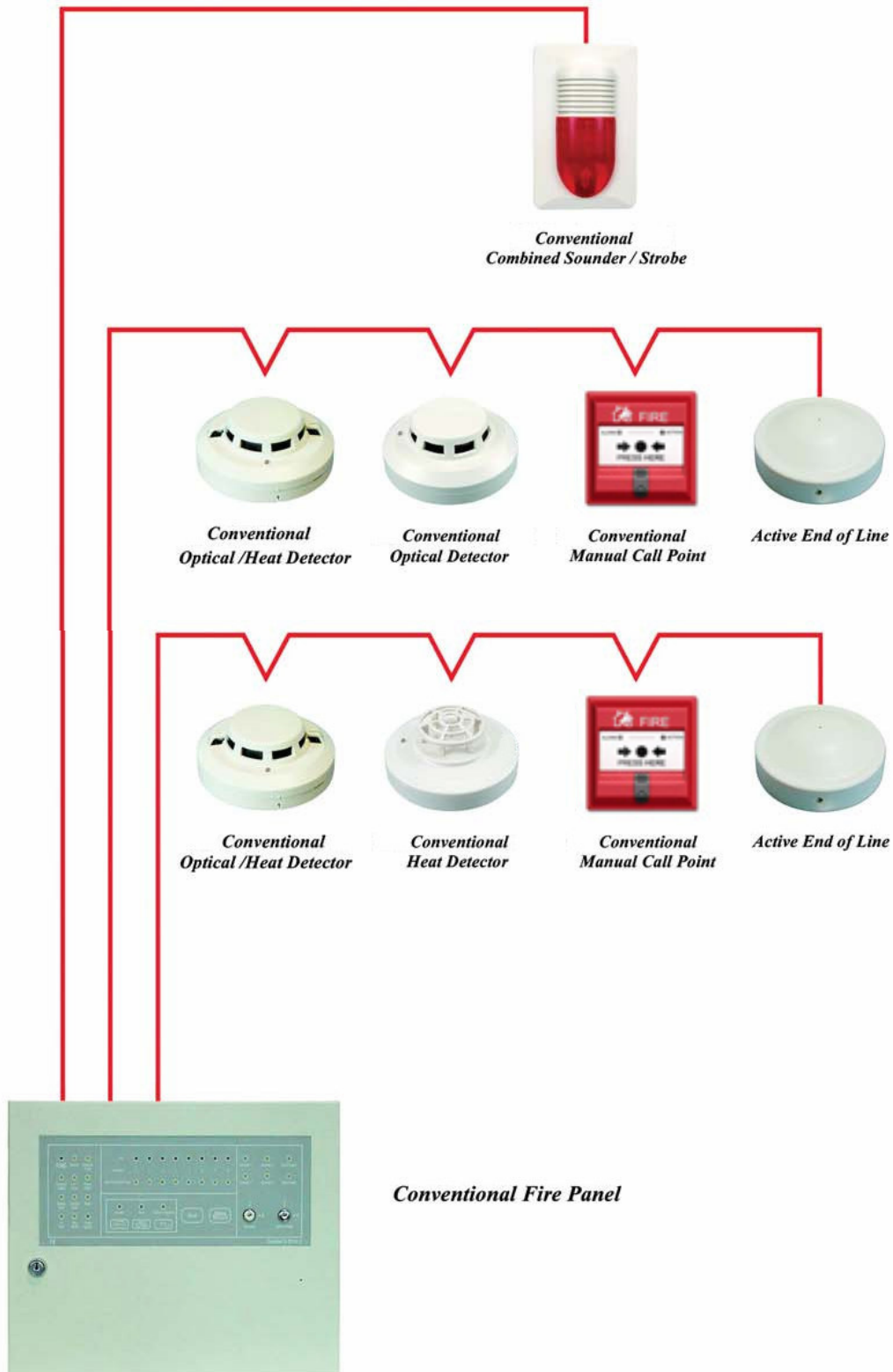


Intelligent Fire Alarm System Connection





Conventional Fire Alarm System





NAPCO - USA
Fire Alarm System
The Intelligent Solution